



Forest Lakes of Cocoa

Innovation That Inspires. Connections That Empower.

Agenda



Who is FiberNow?



Network & Services



Customer Service & Support



Scope of Work



Transition Plans

Who is Fibernow?



Innovation That Inspires. Connections That Empower.

fibernow™




DIGITALBRIDGE



Fueling our growth is our partnership with **DigitalBridge***, a leading global alternative asset manager dedicated to dedicated to investing in digital infrastructure. With a heritage of over 25 years investing in and operating businesses across the digital ecosystem, including cell towers, data centers, fiber, small cells, and edge infrastructure, infrastructure, the DigitalBridge team manages over ~\$108 billion of infrastructure assets on behalf of its limited partners limited partners and shareholders.

DigitalBridge: Leading Global Digital Infrastructure Asset Manager

~\$106B

Assets Under Management ¹

45

Digital Portfolio Companies ²

100+

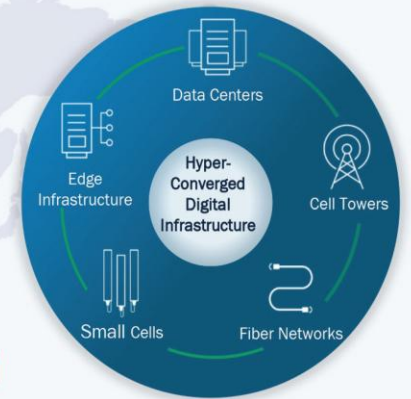
Digital Infrastructure Professionals ³

25+

Average Years of Experience ⁴



INVESTING ACROSS THE DIGITAL ECOSYSTEM



Sector Specialists

25+ year mgmt. track record of building digital infra businesses

High Growth

Revenue and earnings profile aligned with secular tailwinds

Asset-Light

Highly scalable platform addressing capital intensive sector – significant TAM

(1) Assets Under Management ("AUM") as of September 30, 2024: AUM represents the total capital for which we provide investment management services and is generally composed of (a) third-party capital managed by the Company and its affiliates, including capital that is not yet fee earning, or not subject to fees and/or carried interest; and (b) assets invested using the Company's own balance sheet capital and managed on behalf of the Company's stockholders (composed of the Company's fund investments as GP affiliate, warehoused investments, and, the Company's interest in portfolio companies previously in the Operating segment). Third-party AUM is based upon invested capital as of the reporting date, including capital funded through third-party financing, and committed capital for funds in their commitment stage. Balance sheet AUM is based upon the carrying value of the Company's balance sheet investments as of the reporting date.

(2) Consists of DBRG Owned and Advised Companies in the digital infrastructure sector ("Digital Portfolio Companies") as of September 30, 2024. Not all logos are shown.

(3) Digital Infrastructure Professionals as of September 30, 2024.

(4) DigitalBridge's senior private equity investment team members have 25 years of experience owning, operating and managing digital infrastructure assets.



CC CROWN CASTLE

Zayo's acquisition of Crown Castle increased fiber route miles by 50%*

[*Link to Press Release](#)

DigitalBridge's Global Fiber Strategy

Data fiber footprint comprises 45+ portfolio companies across 550 global markets in 4 continents.

~54k
On-Net Buildings

~300k
Route Miles

~3.1M
Premises Connected

The Fibernow Advantage



Trusted Local Provider

20+ years serving Florida communities with fiber to the home technology.



Future-Proof Technology

Technology that outperforms the competition.



Customer Service

Florida based customer experience team & enhanced support.



24/7/365

Local tech support &
Network Operations
Monitoring

+70%

Average first call
resolution

<0:40 sec

Average hold time for
inbound customer service
calls

Testimonial Video



[Link to Video](#)

Communities We Serve

Our service coverage extends across all of Florida.



Latitude Margaritaville
at Watersound
Panama City Beach



Residences on Hollywood Beach
Condominium
Hollywood



Seasons
Condominium
Fort Lauderdale



Townsend Place
Boca Raton



Strada 315
Fort Lauderdale



Midtown Doral
Condominium
Doral



One Fifty-One
at Biscayne
North Miami



The One at
University City
Miami



Network & Services

Network Map

- Fibernow data centers in Central Florida have their own private ring
- Diverse Fibernow long hauls to our Miami Data Center through fiber providers, Zayo & Crown Castle*



Fibernow Data Centers



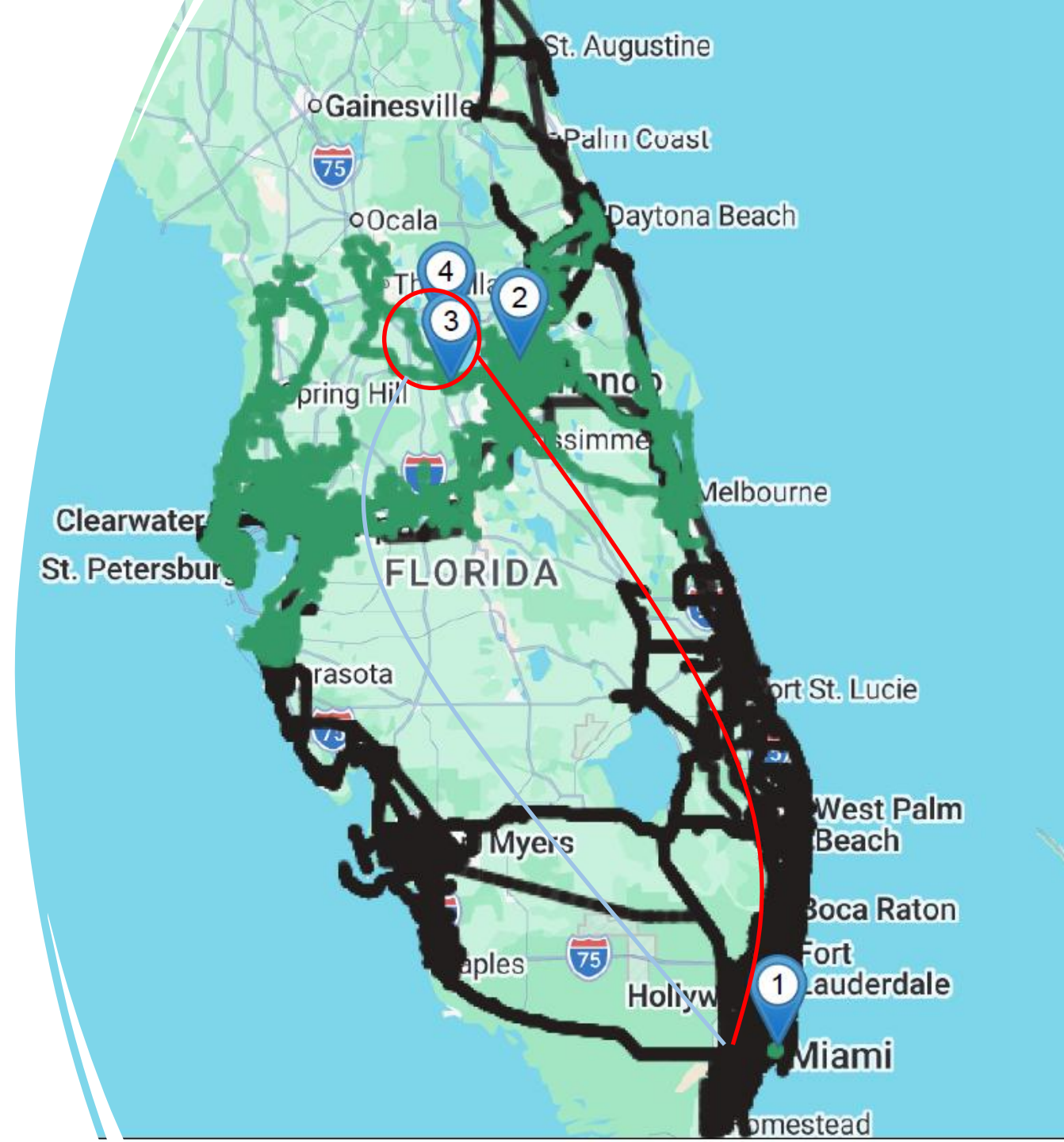
Fibernow Long Hauls



Zayo



Crown Castle

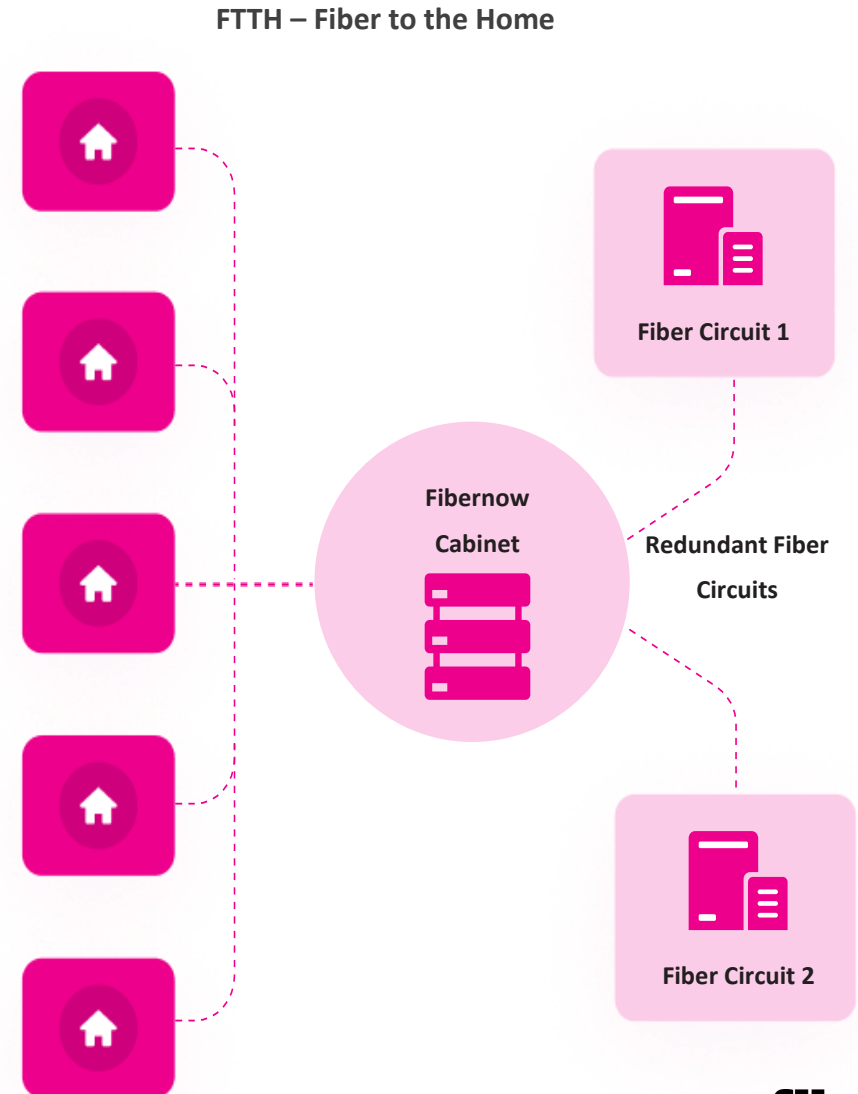


*Zayo and Crown Castle are portfolio companies of DigitalBridge, Fibernow's parent company.

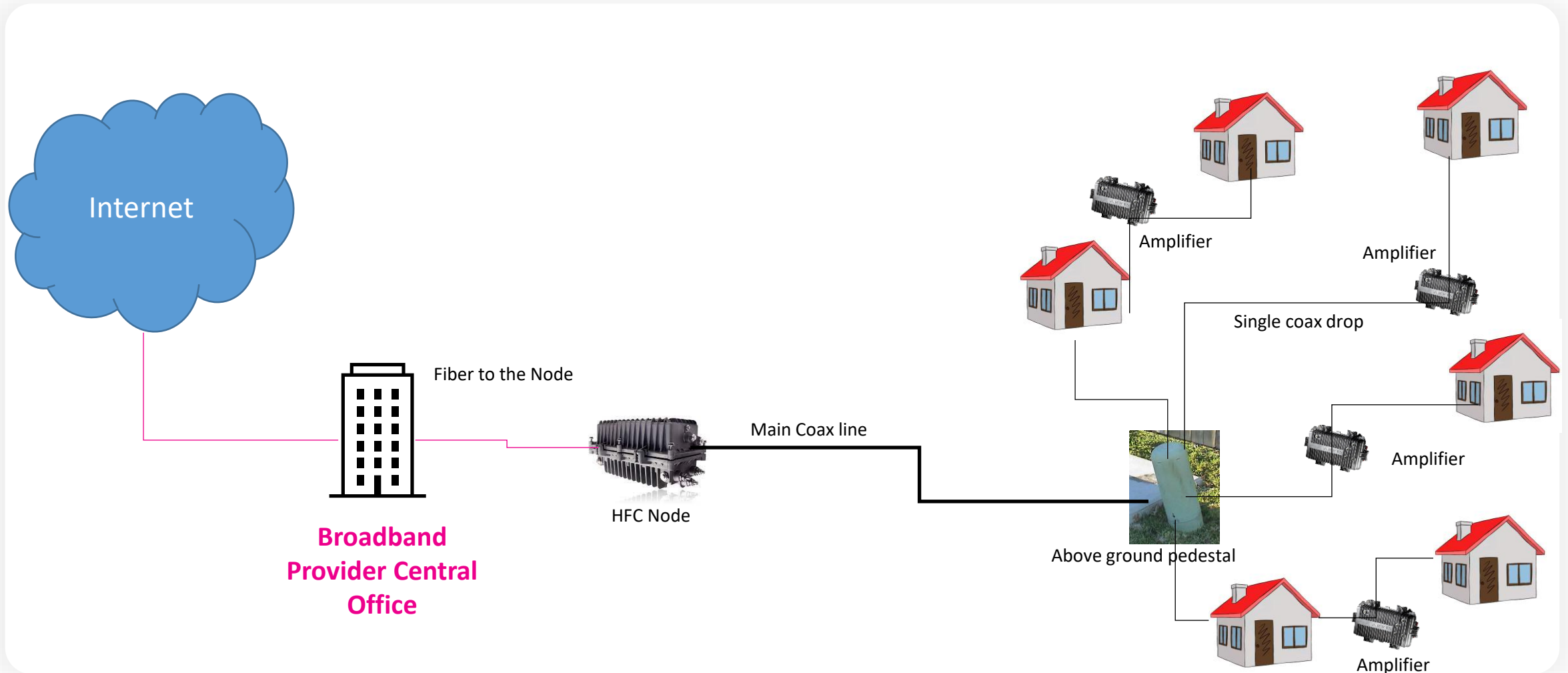
Network Design & Resiliency

Future-Proof Connectivity for Your Community

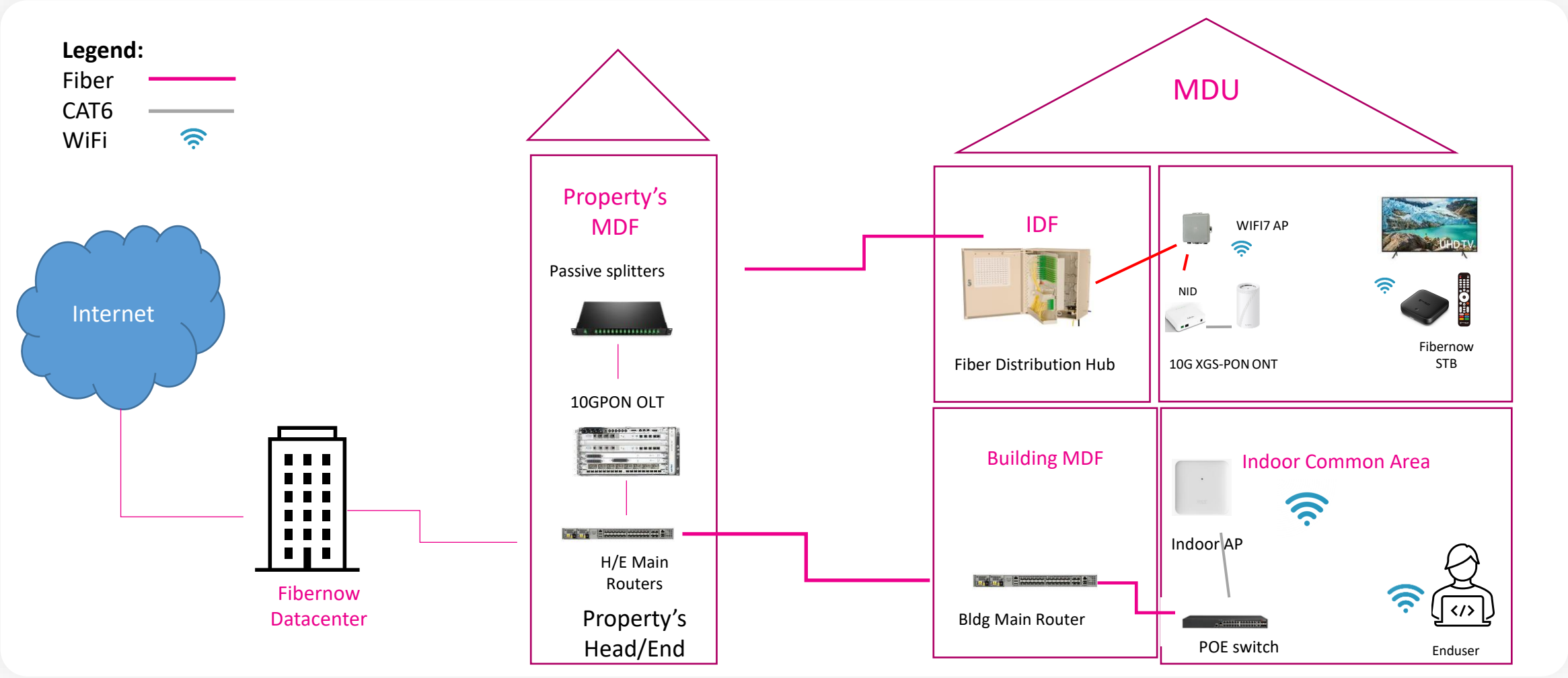
- XGS-PON Fiber-to-the-Home
- Guaranteed Network Uptime
- Battery Back-Up
- Full Network Redundancy
- Dedicated Bandwidth



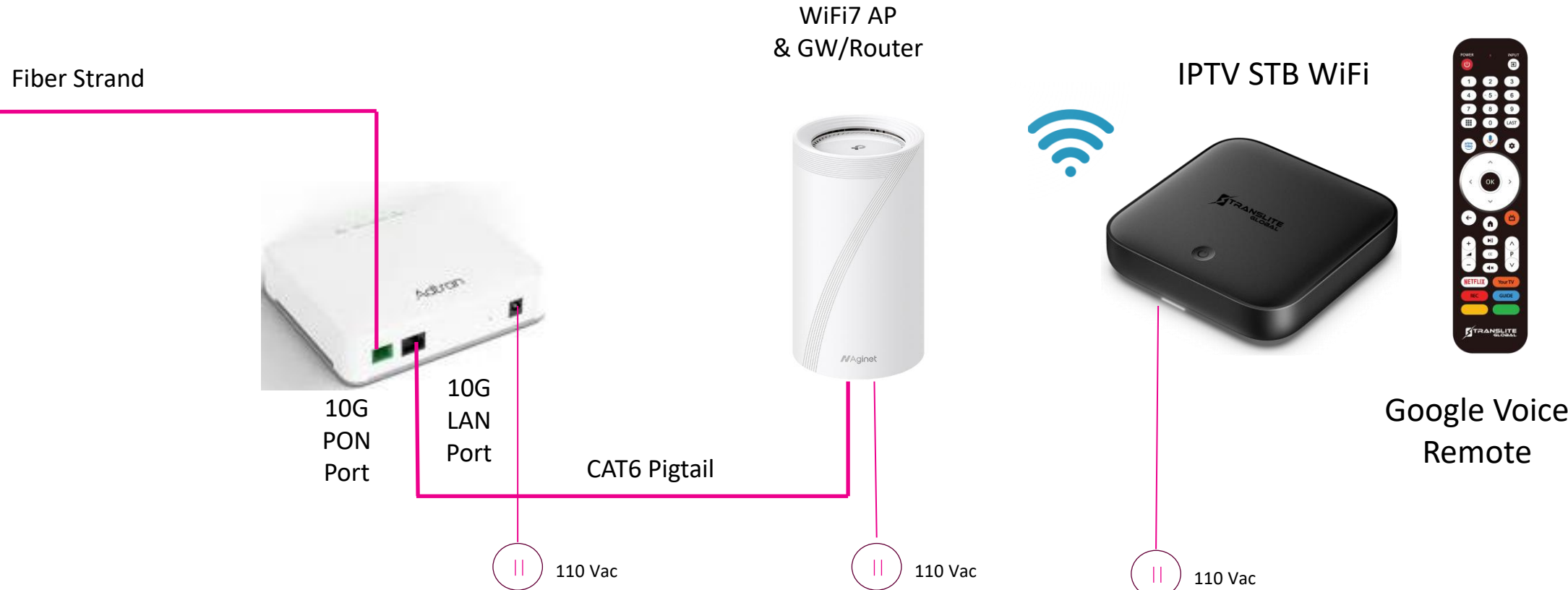
HFC OSP Diagram SFH



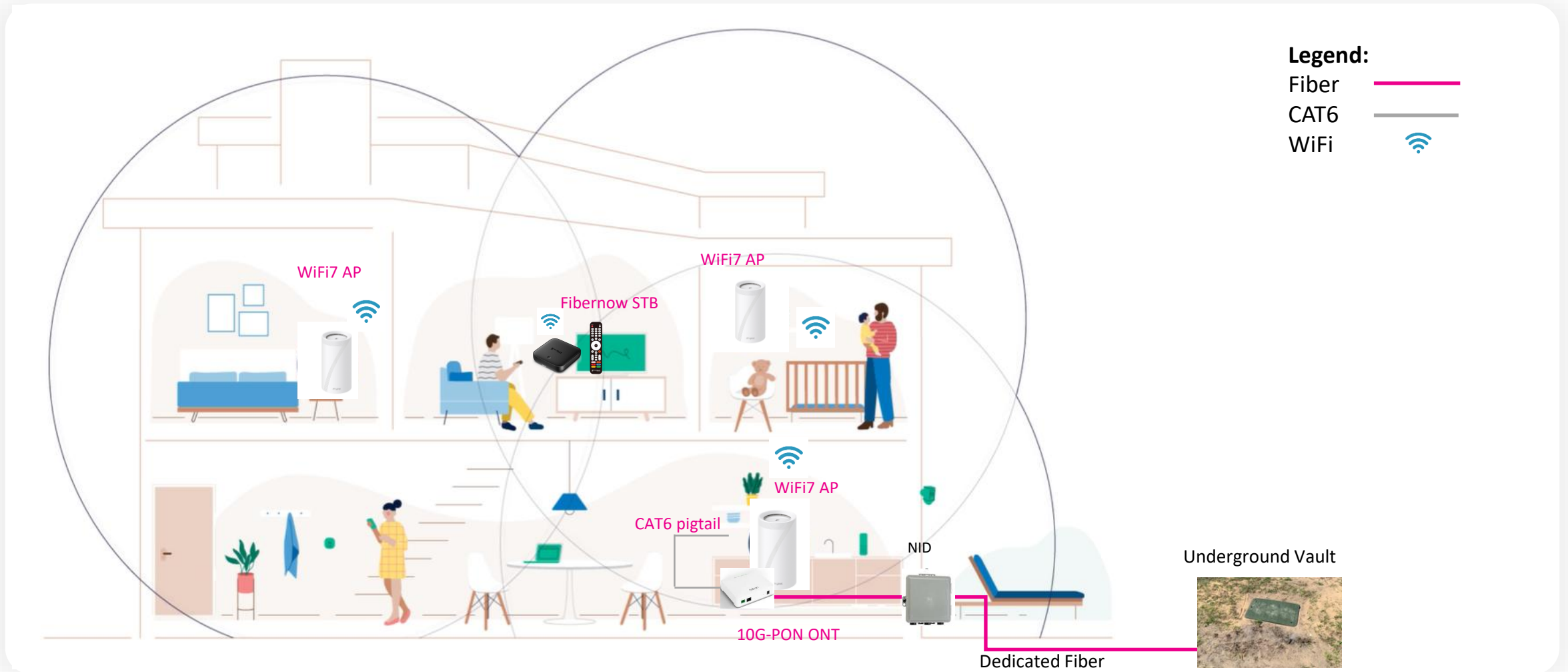
Fibernow ISP Diagram MDU



Inside the Unit Connections

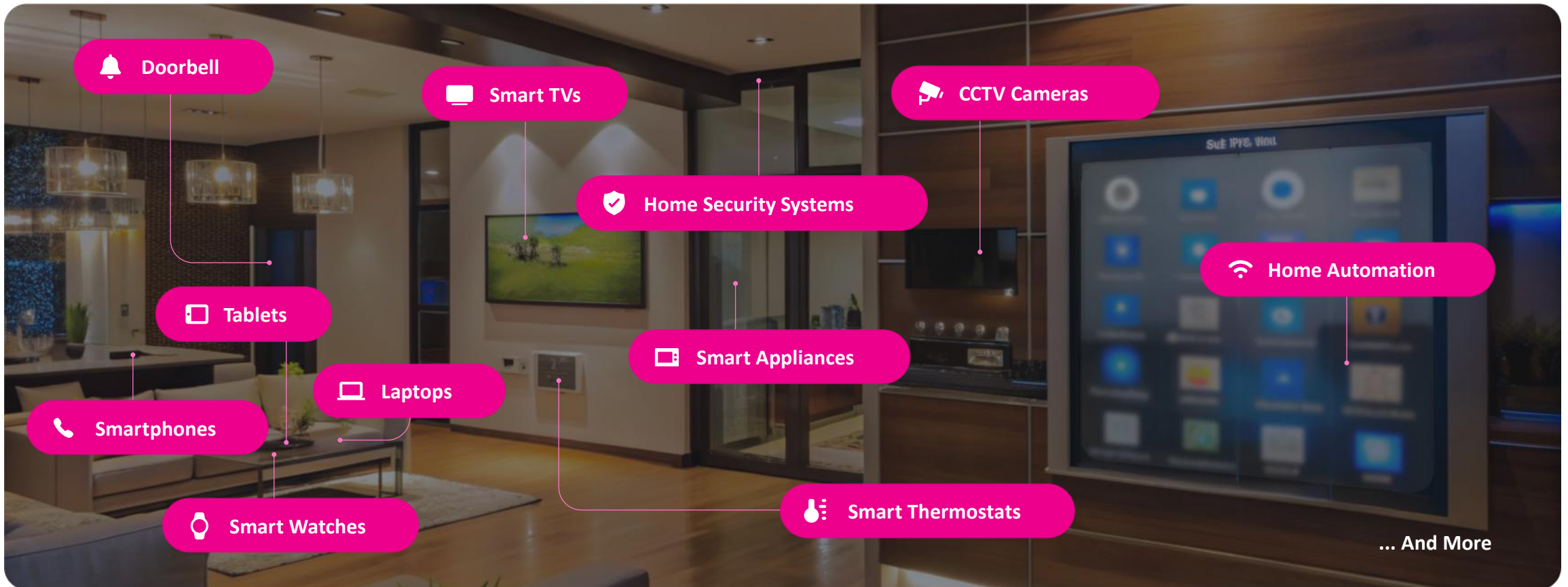


Fibernow ISP Diagram SFH



Whole-Home Intelligent Wi-Fi

The average household now has at least **16 devices** all competing for bandwidth. Each home's bandwidth needs are unique due to the variety and number of connected devices, including:



Intelligent WiFi



Adaptive Wi-Fi

Prioritizes bandwidth throughout your home where you need it most.

Whole Home Mesh Technology

Adapts to all home types and sizes for optimal performance.

Parental Controls

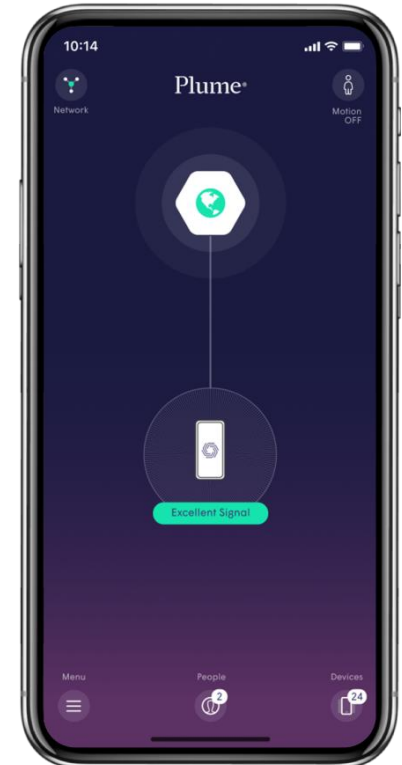
Provides age-appropriate content filters and website blocks.

Real-Time Online Protection

Guards against malicious threats with device quarantine capabilities in case of a breach.

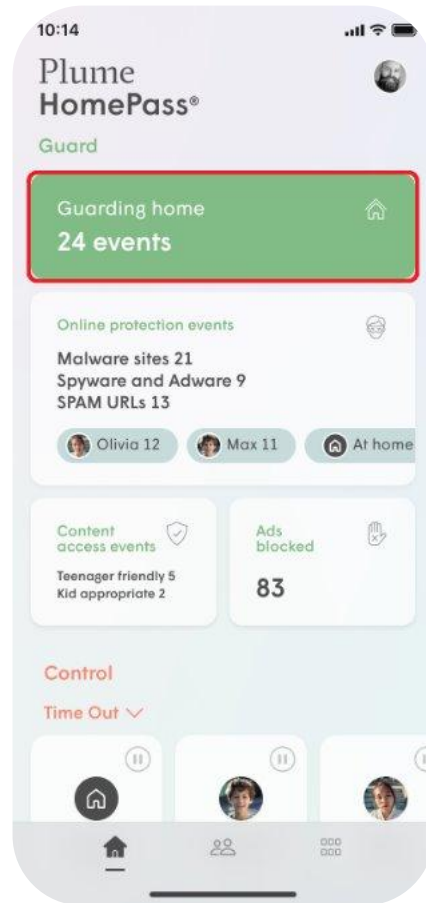
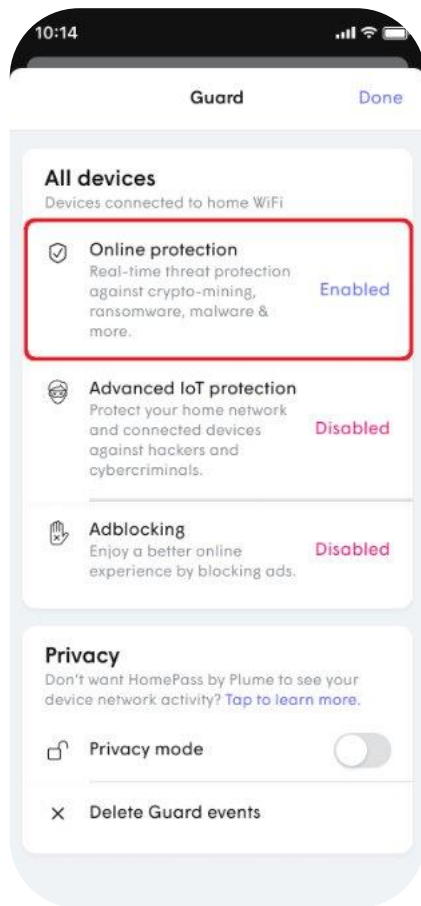
Managed Platform

Full control and customization of your network —or let us assist us assist from start to finish.



Secure Intelligent Wi-Fi

Online Protection will protect your devices from malware sites, botnets, spyware, spam, phishing, keyloggers, monitoring, proxy avoidance, anonymizer, and other harmful attacks on your network.



- Enabled by default on all devices
- Customizable by device or person
- Enabling for a person applies across all devices
- Managed at the Network level via the Guard menu
- Individual settings adjustable in detail screens

Stream TV Cloud Video

Proprietary video platform turbocharged by Google Android, and built upon Apple innovation:

- ✓ **Say It & Play It:**
Advanced search functionally with built-in voice recognition and AI-driven search.
- ✓ **Catch-Up TV:**
Never miss a show! Scroll back and watch, no need to record in advance. 72-hours playback on all channels.
- ✓ **Watch TV Everywhere:**
TV on the go—enjoy live or recorded programs on your mobile devices, anywhere, anytime.
- ✓ **Cloud-Based DVR:**
Record unlimited programs simultaneously with up to 500 hours of cloud storage.
- ✓ **Google Play Store:**
Customizable views with access to thousands of apps.



Fibernow TV App

Stream live TV, access your DVR, and manage recordings, all from the palm of your hand.




- Watch Live TV
- Access Recordings
- Catch Up Anytime
- Easy Navigation
- Personalized Viewing

Community Channels

Dedicated Community Channels for you residents to easily stream news, events and updates.

Today	1:30 PM	2:00 PM	2:30 PM	3:00 PM
56 ion	< Chicago Fire	Chicago Fire		Chicago Fire >
65 WRBW	< Sherri	The Jennifer Hudson Show		Judge Mathis >
66 MOVIES	< Emperor of the Nor	Monte Walsh (1970)		>
67	< Classic Concentration 5/4/87	Classic Concentration 5/4/87	Classic Concentration 5/4/87	The Price Is Right 11/26/56 >
84	< Anna Griffin Elegant Pa	Crafty New Finds		Crafter's Companion >
90 ARCCTV				
91 ARCOMM				
103 U-9	< Law & Order: Special Vi	Law & Order: Special Victims Unit		Law & Order: Special Victin
106 TVLAND	< Gunsmoke	Gunsmoke		Gunsmoke >



Upcoming Community Events

- Fibernow 101
- Pickleball Tournament
- Save the Date: Board Meeting

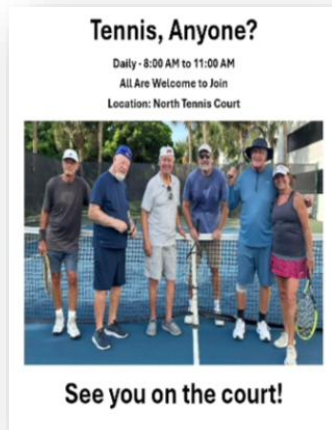
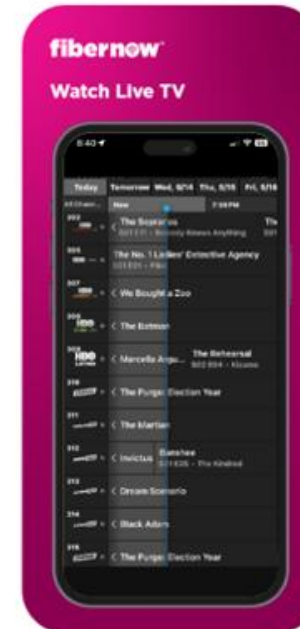
Community Channels

Upload PowerPoints and calendar updates directly to the dedicated channels accessible on mobile as well.

Amenities Activities Community HOA Residential Services Help						
May 2026						
Sun	Mon	Tue	Wed	Thu	Fri	Sat
					1	2
					8am: Morning Pickleball Open Play 9am: Tennis Clinic 10:30am: AM Aqua Fitness 11:30am: Yoga (In Person) 4:30pm: Tennis Hot Shots 16-Under 5pm: Evening Pickleball Open Play 5:30pm: Hitting Frenzy - All Levels	8am: Pickleball Open Play 8am: Tennis Men's Round Robin 10am: Tennis Hitting Frenzy Drill - All Levels
3	4	5	6	7	8	9
8am: Pickleball Open Play 8:30am: Tennis Mixed Doubles Round Robin - All Levels Welcome 10:30am: AM Aqua Fitness	7:30am: Men's Golf 8am: Morning Pickleball Open Play 9am: Tennis Clinic 9am: Tennis Women's Round Robin 10:30am: AM Aqua Fitness 1pm: Games Club	8am: Morning Pickleball Open Play 8am: Pickleball Clinic 8am: Tennis Men's Round Robin 9am: Tennis Clinic 10am: AM Aqua Fitness 1pm: Adult Crafts	8am: Morning Pickleball Open Play 9am: Chair Toning 9am: Tennis Women's Round Robin 10:30am: AM Aqua Fitness 11:30am: Yoga (In Person)	7:30am: Men's Golf 8am: Morning Pickleball Open Play 8am: Pickleball Clinic 8am: Tennis Men's Round Robin 8:30am: Ladies Golf 9am: Tennis Clinic	8am: Morning Pickleball Open Play 9am: Tennis Clinic 10:30am: AM Aqua Fitness 11:30am: Yoga (In Person) 4:30pm: Tennis Hot Shots 16-Under 5pm: Evening Pickleball	8am: Pickleball Open Play 8am: Tennis Men's Round Robin 10am: Tennis Hitting Frenzy Drill - All Levels



Fibernetv



Crystal Clear Digital Phone

Our Fiber-to-the-Home network ensures exceptional call quality with the advantages of traditional landlines & digital technology.



Digital Telephone Service Features:

- 01 **Call Logs** - Easily view and manage your call history.
- 02 **Call Forwarding** - Forward calls to another number seamlessly.
- 03 **Caller ID Retrieval & Delivery** - Know who's calling before you pick up.
- 04 **Call Return** - Quickly return the last call with ease.
- 05 **Call Waiting** - Never miss a call while you're on the line.
- 06 **Flash Call Hold** - Place a call on hold instantly.
- 07 **Last Number Redial** - Redial the most recent number effortlessly.
- 08 **Speed Dial 100** - Store up to 100 contacts for quick dialing.
- 09 **Digital Voicemail** - Access and manage your voicemail anytime.



Customer Service & Support

Local Customer Service & Support



- ✔ Worry free service calls and support.
- ✔ U.S. Based Bulk Customer Service.
- ✔ Dedicated Account Manager.
- ✔ Available 24 x 7 x 365 Bulk Support Team.
- ✔ Best in Class appointment scheduling.
- ✔ Investing in technology to increase first call resolution.

+70%

Avg. first call
resolution

24/7/365

Local tech support &
Network Operations
Monitoring

<0:40 sec

Average hold time for
inbound customer service
service calls

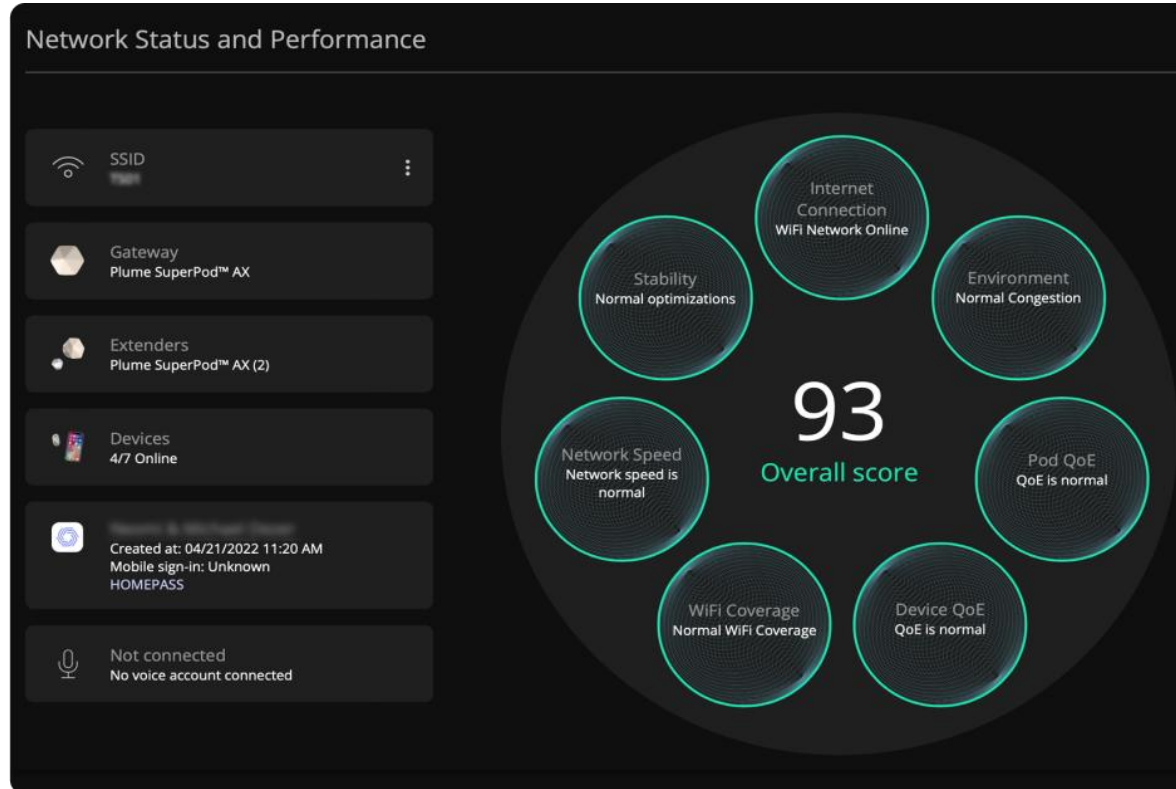
Advanced Managed Wi-Fi Support

Real-Time & Historical Monitoring

Continuous monitoring of each customer's network to ensure top-quality service.

Remote Support & Individualized Control

Manage your network with ease using the **HomePass App**.



True Wireless Mesh

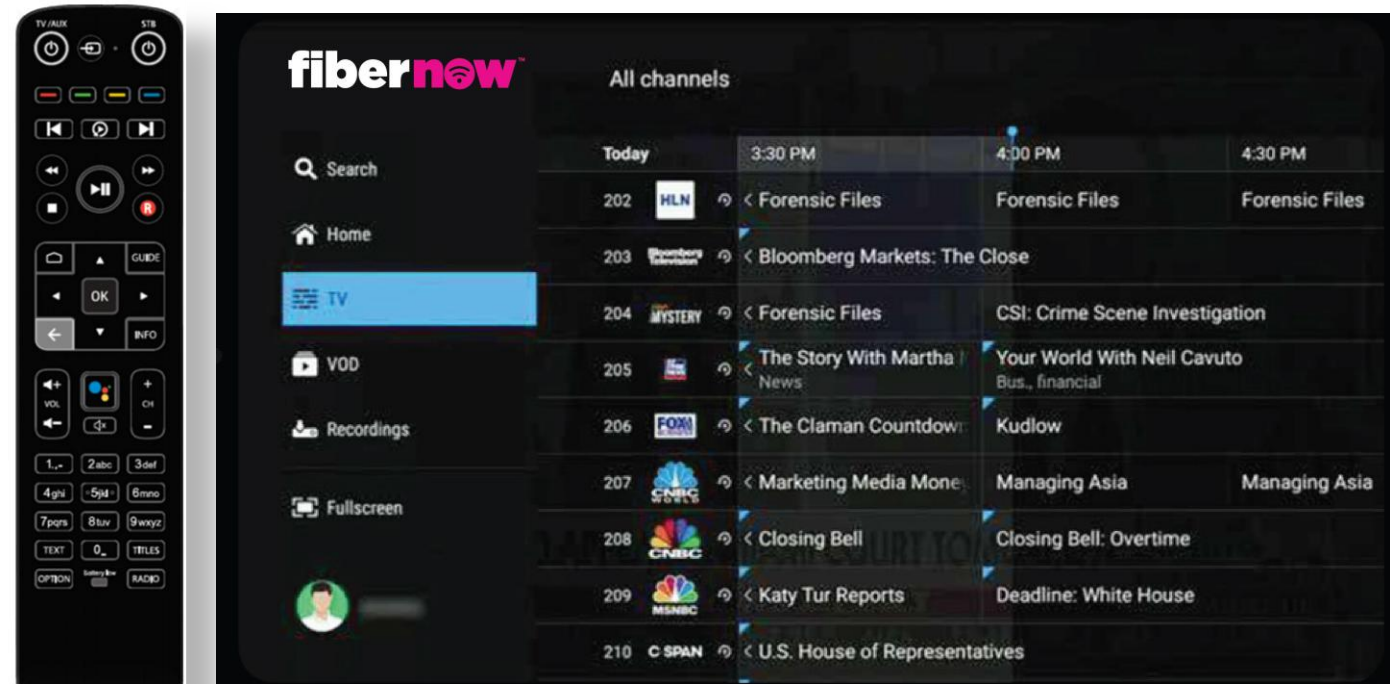
Experience seamless coverage with multi-band WiFi 7 technology.

Automatic Network Optimization

Your network adjusts automatically to changes or when new devices are added.

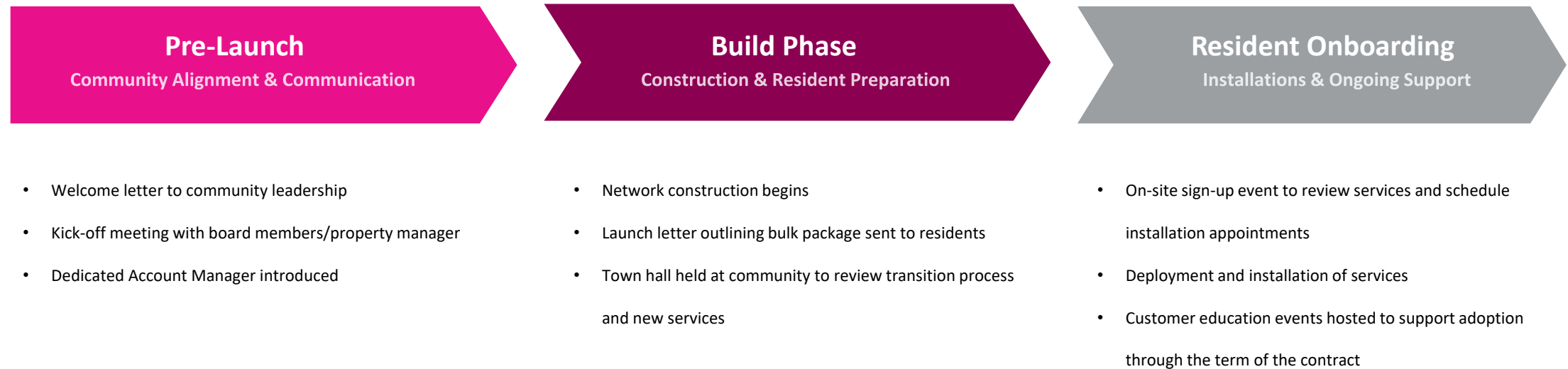
Market Leading Remote Support for Video Services

- ✔ Remote login set top box (STB) support for real time troubleshooting
- ✔ Community performance monitoring to ensure consistent service quality
- ✔ Equipment performance monitoring for proactive issue detection
- ✔ 70% increased first-call resolution
- ✔ 65% reduced need for dispatch



Phased-In Transition

Fibernow ensures a seamless resident **onboarding** experience through clear communication, expert installation, and ongoing support delivered by highly trained personnel at every stage.





Meet the Team: Dedicated to Your Property's Success

- Cross-functional team spanning Account Management, Customer Support, Engineering, & Installation
- Residents are top priority across every department
- Reliable service backed by dedicated customer support
- Commitment to building resident confidence in using services through extensive education and training



Pre-Activation: Building Awareness & Resident Confidence

- **Dedicated Fibernow transition team** leads all resident communications
- **Multi-channel outreach**: email, direct mail, outbound calls, flyers and onsite signage
- Multiple town halls, sign-up events, and educational **sessions held before and during** the launch process
- Engagement begins **90 days prior** to activation



Installation Process: Seamless, Professional & Resident-Friendly

- **Flexible scheduling** with convenient installation time windows
- 2 hours in-home installation with **full device setup** and training
- All home devices connected to the new Fibernow network
- Optional additional in-home training available
- Group education sessions reinforce **ongoing support**





Post Installation: Dedicated, Ongoing Resident Support

- Support includes trouble shooting, additional training, and technician visits
- Ongoing education sessions scheduled throughout the contract term
- Dedicated Account Manager and Technician provide personalized support throughout the contract term



Timeline & Calendar of Events



Month
Year

Kick-off meeting with
Board Members &
Property Manager

Introduction to dedicated
Account Manager

Introduction letter sent to
residents



Month
Year

Construction Begins

New services letter sent
to residents

Town Hall meeting to
with residents



Month
Year

Deployment of
installation services

On-site sign-up event to
schedule installation
appointments and review
services



Month
Year

Continuation of
installation services

Customer education
event hosted to support
residents with questions
about the new
equipment.



Month
Year

Customer education
event hosted to support
residents with questions
about the new
equipment.

Communications Materials Examples

Welcome Letter



Fibernet Fiber Internet & TV Services Coming to your Community!

Enjoy faster, more reliable internet and elevated entertainment with Fibernet's advanced Fiber-to-the-Home technology.

Dear Resident,

We're excited to welcome you to Fibernet, your new internet and TV service provider. Your community is upgrading its internet and cable services to deliver a faster, more reliable connection and a better viewing experience with future-proof technology. The following services will be included in your bulk package which is covered by your association fees:

Fiber Internet Service:

- 1 Gbps symmetrical upload & download speeds
- Wi-Fi mesh network for whole-home coverage

Streaming TV:

- Flex Bulk Channel Lineup in HD
- Local Channels
- One (1) Wireless Set-Top Box
- Catch-Up TV and never miss a show - no need to record in advance
- Cloud-Based DVR with 250 hours of cloud storage
- Google Play Store with customizable & access to thousands of apps
- Watch TV anywhere, anytime on your mobile devices

We'll be sharing next steps soon, including installation details and how to get the most out of your new services. Our goal is to make this transition as smooth as possible so you can enjoy the benefits seamlessly.

We look forward to being your trusted provider and delivering exceptional Internet and TV services to your community.

Warmly,
The Fibernet Team



support@fibernet.com

fibernet.com

Town Hall



Town Hall: New Internet & TV Services by Fibernet

We're excited to invite you to a Town Hall event hosted by your dedicated Fibernet Account Manager, where you'll learn more about the new Fiber Internet and TV services coming to your community.

Date: Monday, June 9th

Time: 4 P.M. - 6 P.M.

Location: Clubhouse

This live session will walk you through your new service package, provide an overview of the transition timeline, and review optional upgrades to personalize your experience. You'll also have the opportunity to ask questions directly to the Fibernet team.



Here's what's included in your bulk package covered by your association fees:

Fiber Internet Service:

- 1 Gbps symmetrical upload & download speeds
- Wi-Fi mesh network for whole-home coverage

Streaming TV:

- Flex Bulk Channel Lineup in HD
- Local Channels
- One (1) Wireless Set-Top Box
- Catch-Up TV and never miss a show - no need to record in advance
- Cloud-Based DVR with 250 hours of cloud storage
- Google Play Store with customizable & access to thousands of apps
- Watch TV anywhere, anytime on your mobile devices

We look forward to helping you unlock the full potential of your new Fibernet services.

support@fibernet.com

fibernet.com

On-Site Event



You're Invited: Fibernet is Live at Triton Tower!

We're thrilled to announce that construction is now complete—and your new Fibernet Internet and TV services are officially ready to be activated! Join us for a special in-person event to help you get started, where you can:

- Schedule your installation appointment
- Learn more about your included services
- Meet the Fibernet team and ask any questions
- Explore upgrade options for even faster speeds or enhanced TV packages

Event Details:

Date and Time: Monday, June 16th from 10 A.M. - 3 P.M. and Wednesday, June 17th from 2 P.M. - 6 P.M.

Location: Triton Tower - Mezzanine Meeting Room.

We look forward to helping you unlock the full potential of your new Fibernet services.



support@fibernet.com

fibernet.com

Bulk Proposal

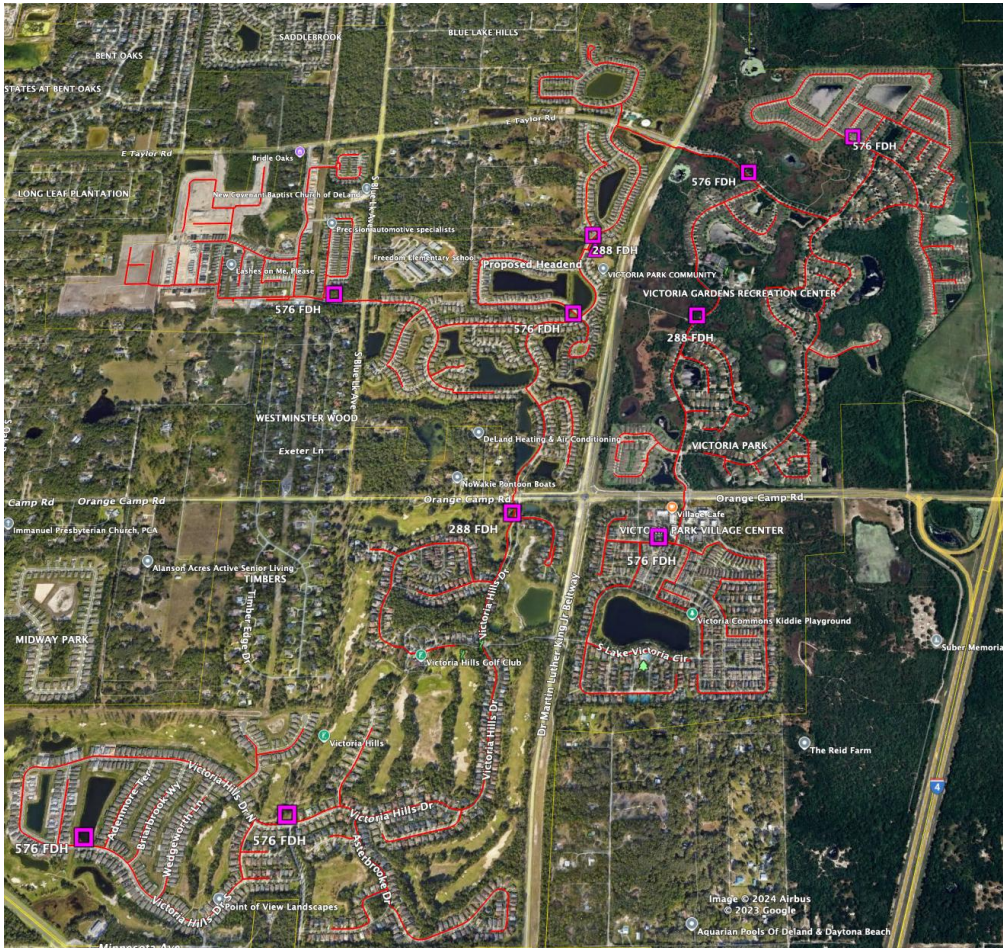
Date	
Rate	\$39.99 excluding taxes
Annual Increase	4% Annual Capped Increase
Internet Speed	1 Gig Internet – Symmetrical Speeds • 2 Enhanced Wi-Fi Mesh System – Wi-Fi 7 • Individual Internet Upgrades up to 10 Gbps symmetrical speeds • Fiber to the Unit infrastructure-
Video	N/A
Term	10 Years, with the first 6 Months Free (\$58,305.42Value)
Door Fee	\$200 per unit - \$48,600 onetime payment to the association
Additional Comments	Commercial Grade Wi-Fi to selected common areas complimentary throughout the term

Confidentiality & Proposal Terms: This proposal and its contents are confidential and intended solely for the recipient. No portion may be shared or distributed without Fibernow’s written consent. Pricing reflects monthly service rates and excludes applicable taxes and government fees. Channel lineups and service details are current as of the proposal date but subject to change. Final terms are contingent upon an executed agreement and completion of a property site review. All prior offers are superseded by this proposal, which remains valid for thirty (30) days from the date of issue. This proposal is contingent upon Fibernow management final approval.*



Scope of Work

Network Design – Infrastructure Map

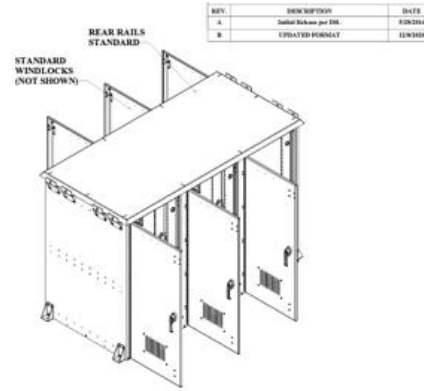
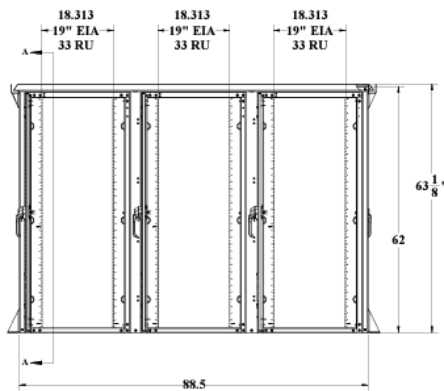


- ✓ The Proposed System is a Complete 100% Fiber Optic Network.
- ✓ The System is an XGS PON Fiber to the Home (FTTH) Network.
- ✓ The System Will Support a 10Gbps Symmetrical Speed Profile at Launch and Fibernow is already Working on the Next Upgrades Allowing for 100Gbps and Beyond with Only a Simple Change to the End User Equipment to Deliver the Service at a Later Date.
- ✓ As a Passive Optical Network, the only Active (Electrically Powered) Equipment Resides at the Main Cabinet – All Subsequent Cabinets (FDHs) are Passive and Require No Additional Power Providing Less Failure Points.
- ✓ The Planned Fibernow Network will also include 2 Fibers to Each Home.

Network Design – Headend Cabinet



- ✓ Triple Bay Cabinet to be Located at an Agreed Upon Area Inside the Community
- ✓ 62" High x 88" Wide x 42" Deep
- ✓ Houses all Electronic Equipment including the OLT Shelf, Routers, Switches, Processing Equipment and DC Power
- ✓ Standalone External Generator with Automatic Transfer Switch to Provide Backup Power to Augment the DC Power Backup in the Cabinet



Network Design – Infrastructure



24"x36"x24" Handholes used throughout property to splice laterals off main fiber into the buildings and distribution points



Why Choose Fibernow?

Here's how Fibernow can elevate your services and provide unmatched support:

- ✔ **Symmetrical Internet Speeds Up to 10 Gbps**
Power your operations with ultra-fast fiber connections for both upload and download download speeds.
- ✔ **Industry-Leading Response Times**
Hold times of less than 40 seconds, ensuring ensuring swift assistance.
- ✔ **Cloud-Based Video Solutions**
Proprietary TV platform with control over video content and features.
- ✔ **U.S. Based Call Center**
Our local, in-house team is ready to assist with personalized service with technology to remote into your system as needed.
- ✔ **Dedicated Account Management**
From day one, your community is backed by a Communtiy Account Manager delieving personalized service throughout contract.
- ✔ **First-Time Call Resolution Over 70%**
Experience real-time troubleshooting for immediate problem solving.
- ✔ **Financial Security**
Supported by DigitalBridge, we provide the financial financial strength & network to keep your community connected.
- ✔ **Advanced Managed WiFi 7E**
Enjoy real-time monitoring, customizable control, and enhanced coverage throughout your home.
- ✔ **Redundancy for your Network**
Two divergent paths for 99.99% uptime, no no lagging.



fibernow™

fibernow.com



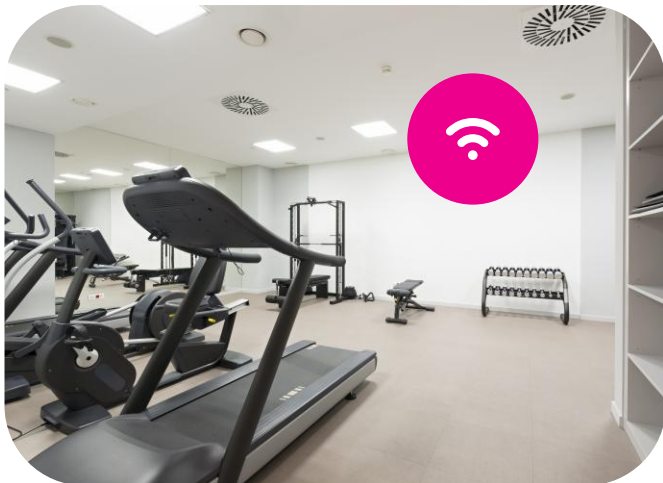
Appendix Slides

Common Area Services



Business Grade Services for Amenities

- Wireless Hotspots in Common Areas
- Static IP Addresses
- Data Connections



Seasonal Plan

Designed for part-time residents who are away for extended periods:



Pause billing for up to 6 months



No payment required during seasonal pause



Available once per calendar year



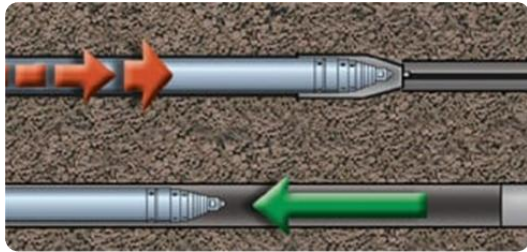
Easy reactivation upon return



Network Design – Construction Methods

Pneumatic Missile Boring

(Horizontal Directional Boring)



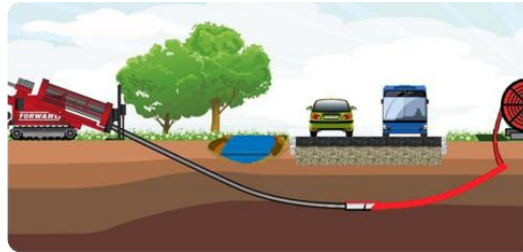
Bore pits are created every 35 feet to place the missile in the fiber pathway.

Compressors power the missile, creating a pathway for 2-inch HDPE conduit containing fiber optic cables, buried at a depth of 24-30 inches.

Minimal restoration: sod is cut and replaced after boring, with full restoration completed after each phase.

Horizontal Directional Drilling

(HDD)



Ideal for **accurate conduit placement** in long runs or when navigating obstacles.

Various machine sizes ensure the **appropriate equipment** is used for each pathway.

Minimal restoration is required, as the drill can extend several hundred feet with only one bore pit needed.

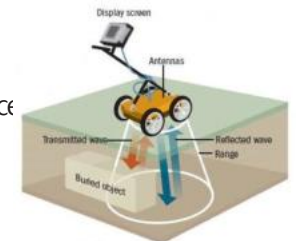
While not suitable for every location, HDD will be used for many runs throughout the project.

Ground Penetrating Radar



Prior to any Underground Construction, Fibernow will Utilize Ground Penetrating Radar (GPR) Tests to Validate all Sunshine 811 Locates

Locates are not Always Accurate, Using GPR for the Project will Significantly Reduce the Possibilities of Damaging Existing Facilities including Water, Power and Sewer



Network Design – Infrastructure Distribution Cabinets

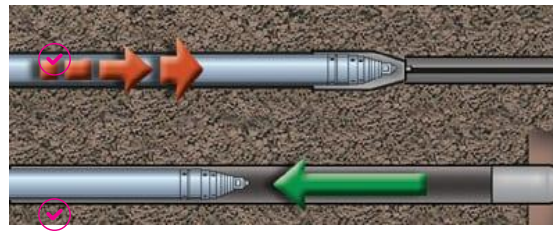


- ✔ 576 Fiber Distribution Hub (FDH) or Splitter Cabinet.
- ✔ 35" High x 33" Wide x 18" Deep. Provides connectivity up to 576 homes within that area.
- ✔ Placed within easement and can be hidden in various ways for aesthetic purposes.



- ✔ 288 Fiber Distribution Hub (FDH) or Splitter Cabinet.
- ✔ 35" High x 18.5" Wide x 17" Deep. Provides connectivity up to 288 homes within that area.

Network Design – Construction Methods



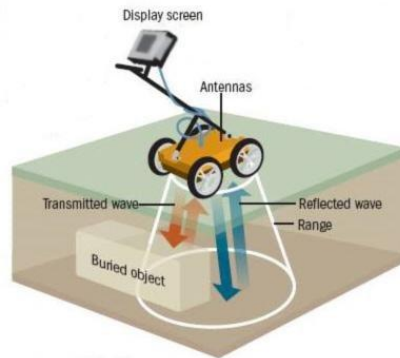
- ✔ Pneumatic Missile Boring or Horizontal Directional Boring is the Most Common Method
- ✔ Bore Pits are Created Every 35' to Allow the Missile to be Placed into the Fiber Pathway
- ✔ Compressors Provide the Necessary Power to Push the Missile Through Creating a Pathway for the Multiple 2" SDR HDPE Conduit Containing the Fiber Optic Cable at a Minimum Depth of 24-30"
- ✔ Allows for Limited Restoration as Sod is Cutout and Placed on Side and then Placed Back after the Bore is Complete
- ✔ All Restoration to Take Place after each Phase is Completed

Network Design – Construction Methods

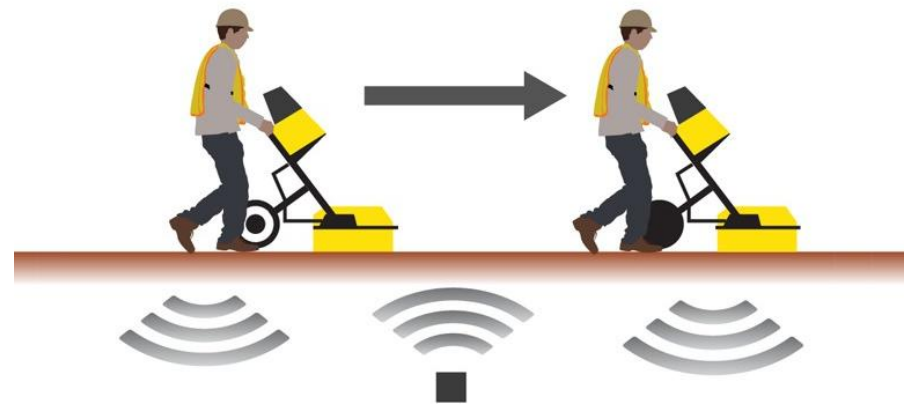


- ✔ Horizontal Directional Drilling or HDD is another Construction Method to be Used
- ✔ Allows for Accurate Placement of Conduit, Especially when Multiple Obstacles Exist, or the Run is Very Long
- ✔ Multiple Size Machines Exist Allowing for the Appropriate Machine to be Used for the Particular Pathway
- ✔ There is very Limited Restoration as the Drill can Extend Several Hundred Feet as Needed with only a single Bore Pit Needed
- ✔ Not the Solution for all Locations but will be Used for Numerous Runs Throughout the Project

Network Design – Construction Methods

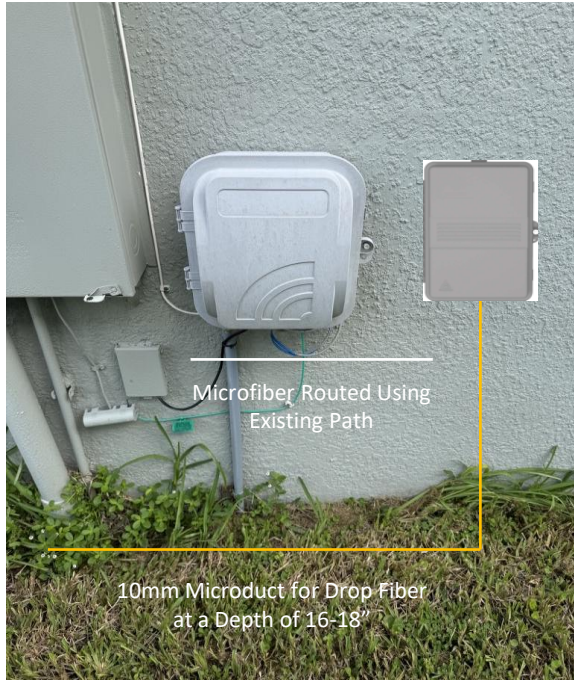


Ground Penetrating Radar

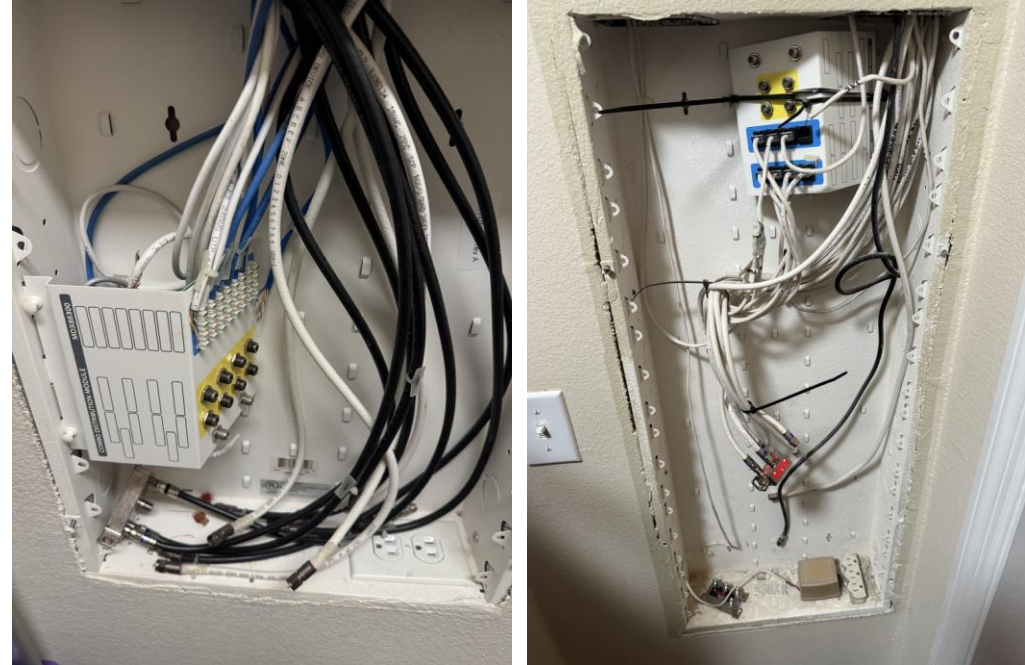


- ✓ Prior to any Underground Construction, Fibernow will Utilize Ground Penetrating Radar (GPR) Tests to Validate all Sunshine 811 Locates
- ✓ Locates are not Always Accurate, Using GPR for the Project will Significantly Reduce the Possibilities of Damaging Existing Facilities including Water, Power and Sewer

Network Design – Home Installation



Fibernow will Install a Small Splice Enclosure at the Current Outside Demarcation Point to Allow for a Test/Junction Point for the Incoming Drop Fiber and Allow for Serviceability Throughout the Life of the System



Fibernow will Install the ONT in the Existing Demarcation Panel within the Home Using the Existing AC Power and Internal Wiring Allowing for a Limited Impact to the Resident's Home and Reducing the Need to Route New Cables